

Hi Kuka-gurus,

We are trying to initiate our KUKA lbr iiwa 14 R820 on a flexFELLOW 900 standard, and we cannot troubleshoot the following base error for I/O on the smart pad:

<SYS-X44> Error during ECat stack initialization [NetworkResponse() no Network Response]—> Error of Field Buses (FlexFellow)

Fixing the issue with I/O mapping in WorkVisual does not work, because the software does not recognize the created IOConfigartion.wvs file.

Does anyone have a clue!

Attached are further details and snapshots.

PS: We are using WorkVisual 5.0.5 Build0600 for Sunrise.OS 1.17, which is compatible according to the KUKA support line and release notes.

Setup:

KUKA lbr iiwa 14 R820
flexFELLOW 900 Standard

Software installed:

* everything is running on Windows 10

Sunrise Workbench - 1.17.0.5

optional packages:

- Autogenerated language fragments
- KUKA Application Framework
- KUKA Sunrise.AntiVirus
- KUKA Sunrise.Basic Toolbox
- KUKA Sunrise.DataViewer
- KUKA Sunrise.flexFELLOW
- KUKA Sunrise.GripperToolbox
- KUKA Sunrise.HumanRobotCollaboration 1.0
- KUKA Sunrise.OS Language Pack
- KUKA Sunrise.PROFINET® M/S
- Sunrise Workbench

[image01]

WorkVisual V5.0 - Sunrise (5.0.5 Build 0600)

optional package:

- sunrise.kop (Sunrise 1.3.15.0)

[image02]

Basic error:

<SYS-X44> Error during ECat stack initialization [NetworkResponse() no Network Response]

—> Error of Field Buses (FlexFellow)

[image 03]

Assumed solution for X44 error:

IO mapping of in- and outputs of the in the FlexFellow platform integrated Beckhoff EtherCat EK1100, EL 9188, EL9189, EL1809, EL2809.

Mapping via WorkVisual with installed Sunrise package. Opening the IOConfiguration.wvs file works only with the designated WorkVisual, according to the Sunrise Release note it is WorkVisual 5.0.5 Build0600 for Sunrise.OS 1.17.

[image04]

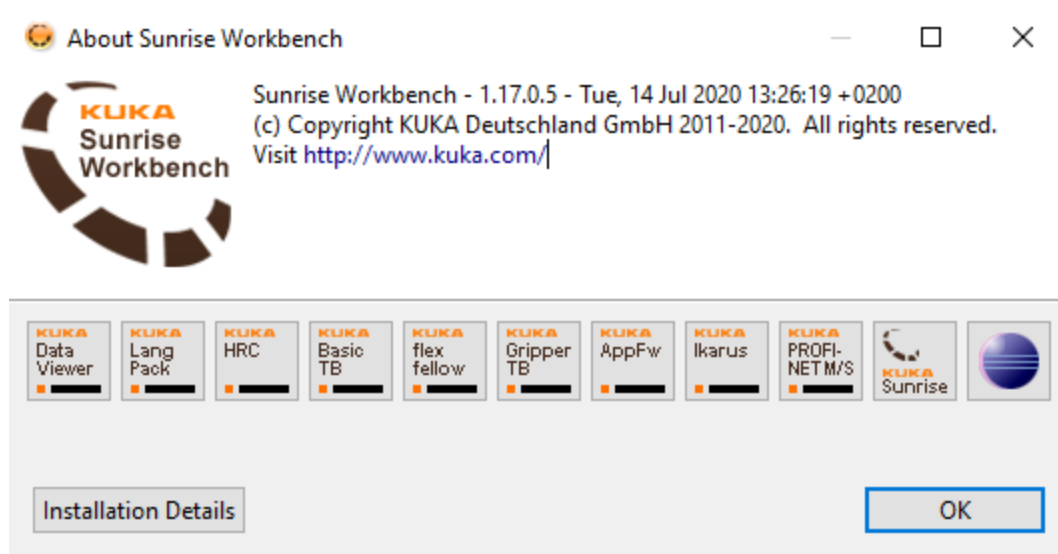
Software issues:

The in the Sunrise project created IOConfiguration.wvs [image05] cannot be opened in the designated WoV. "The file does not represent a valid project and it cannot be open!" [image06]

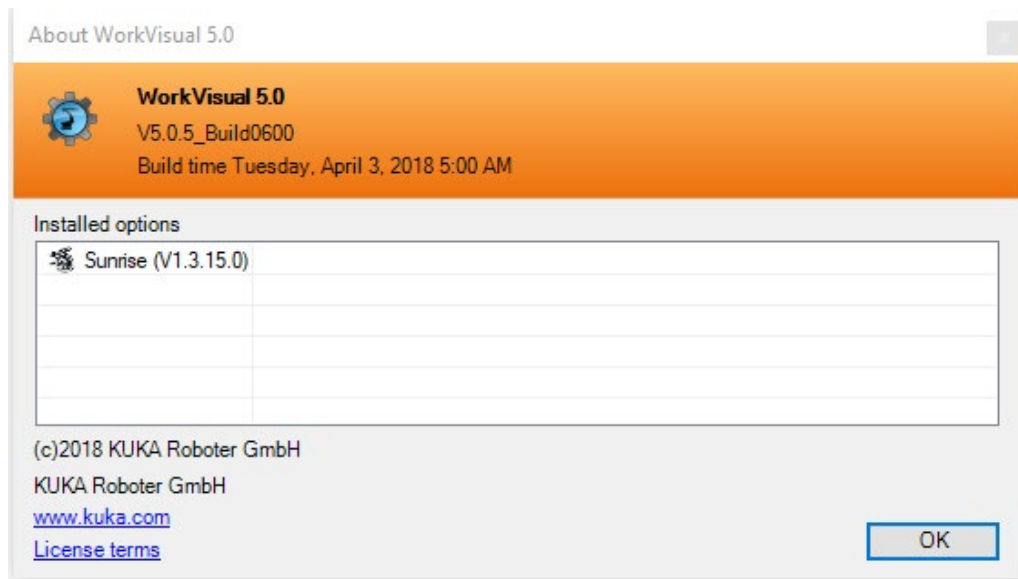
(Also if the project get exported, an error occurs: "Resource is out of sync with the file system" [image 07])

To compare, the file can be opened as expected with a different WorkVisual, in this case the latest 6.0 version I/Os can be mapped, but obviously the export to Sunrise fails (not the correct WoV version).

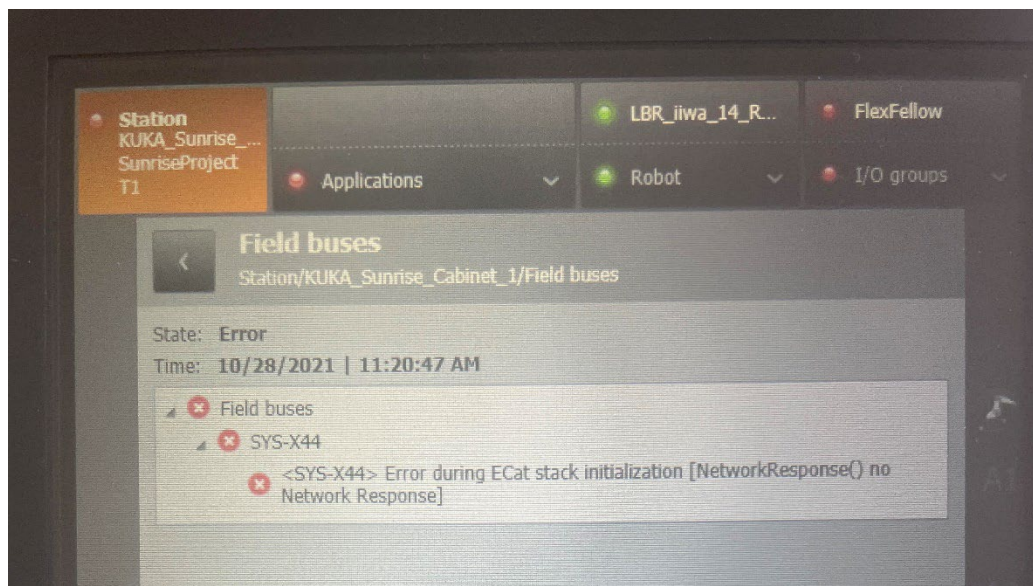
Any ideas?



[image01: Sunrise Installed Software]



[image02: Work Visual + Installed Sunrise Package]



[image 03: Smart Pad SYSX44 Field Bus Error]

New Functionality:

- Win10 IoT compatibility established
- Detachable application debug interface

Fixed Bugs:

- Improved stop behavior when releasing jogging buttons under high system utilization
- Stabilization of the planning of blending movements after movement interruptions
- Correction of the displayed application status on the HMI after an application or sequence error
- Correction of the application management in order to avoid "Application stays in running" situations
- Fix of application management problems, which can occur in case of using the "stopAllInstances()" method
- Improved the update frequency in application log while permanently pushing lots of messages per second
- Correction of the behavior regarding application change during external control in operation mode AUT
- Fix of the "setHomePosition(AbstractFrame)" bug
- Fix of KLI-address range bugs, which had impact on safe communication
- Override assignment for jogging to selected frames corrected
- Fix for invalid safety oriented tool data after synchronization
- Stabilization of the endurance behavior

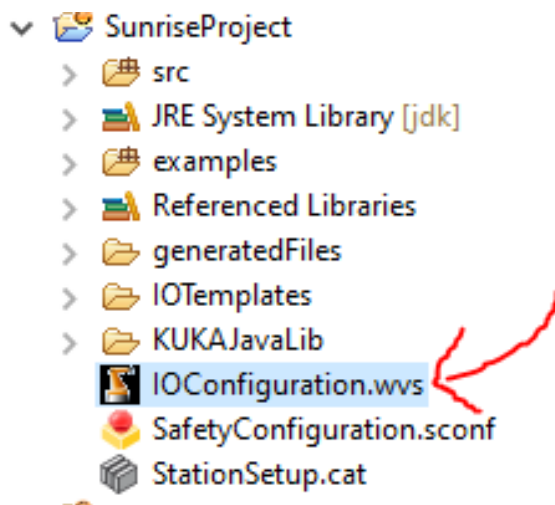
IMPORTANT NOTES:

-

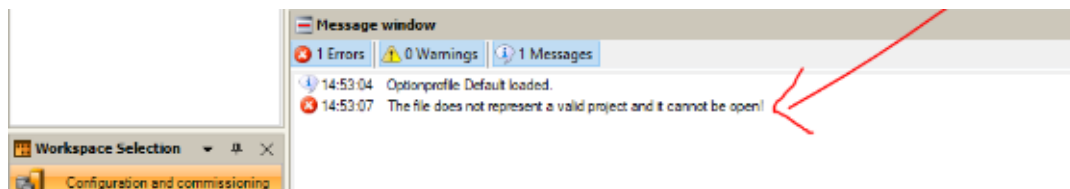
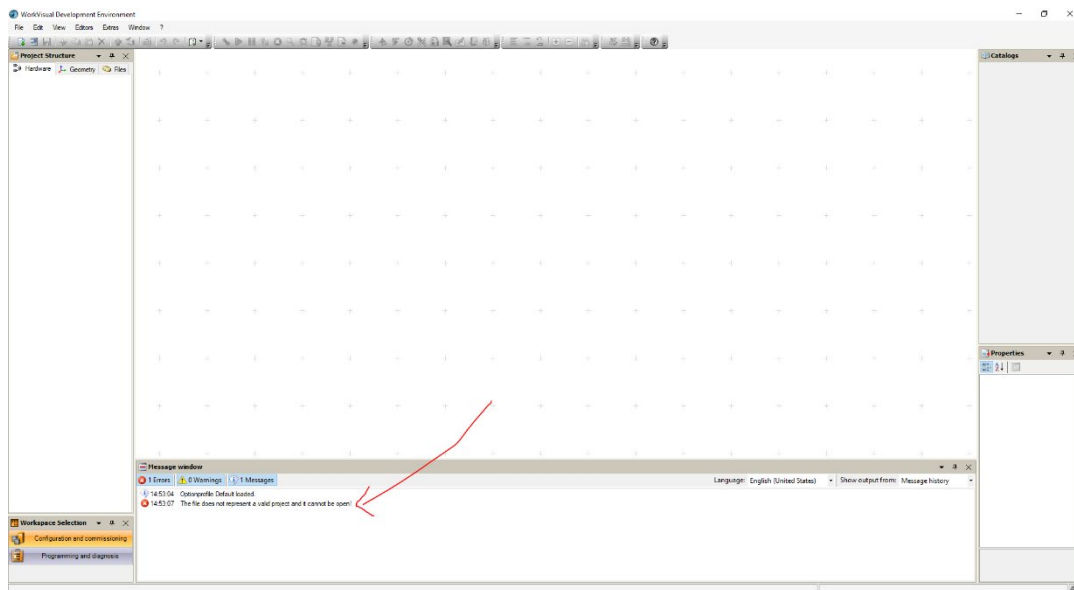
System Requirements:

1. Sunrise.BasisImage Win10 V4.3.0
2. KUKA Sunrise Cabinet with Mainboard D3445-K
3. PDS Firmware V1.5.4-2
4. Work Visual V5.0.5 build600

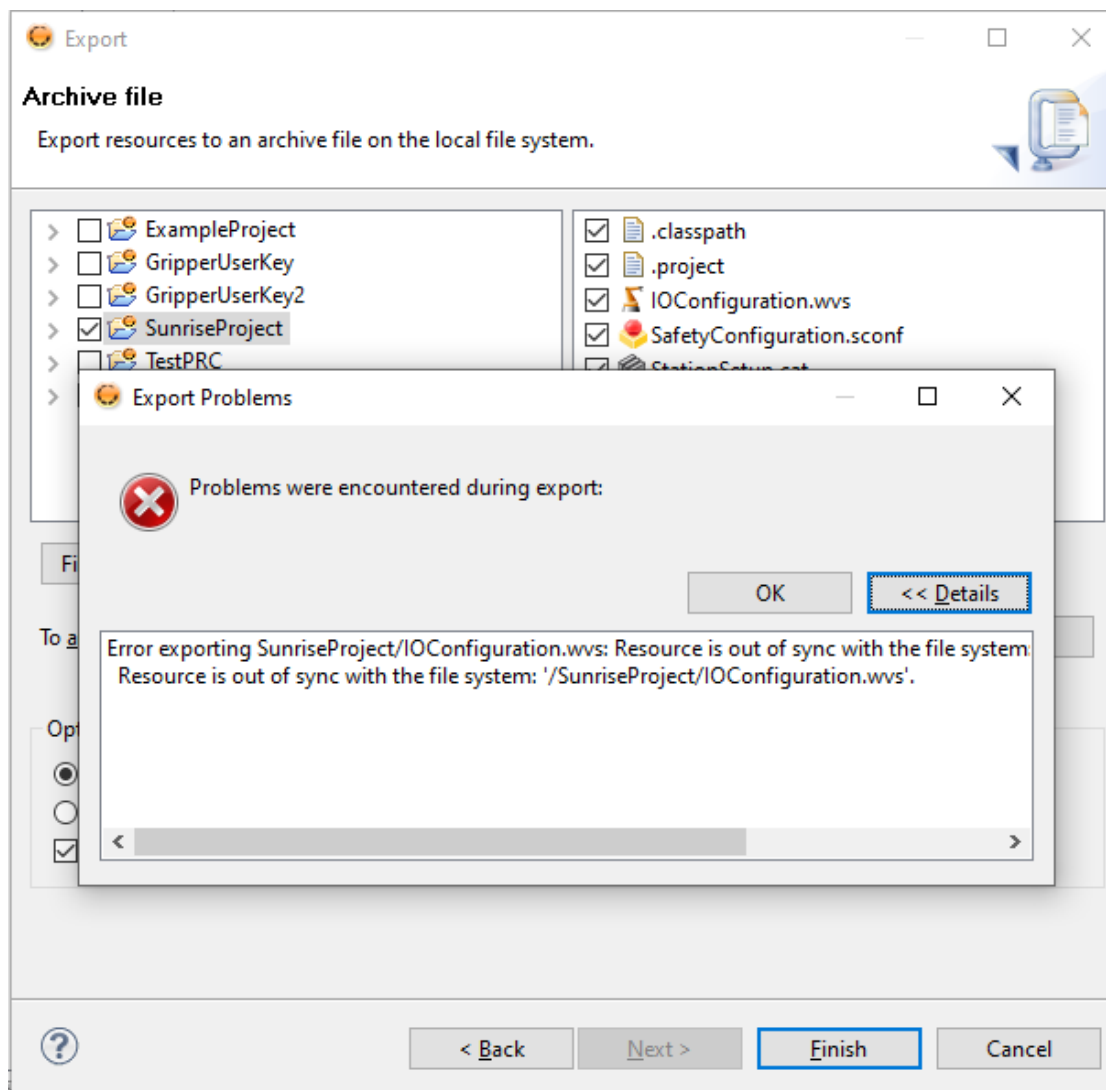
[image04: Release Note Sunrise 1.17]



[image05: Sunrise project structure with IOConfiguration.wvs file]



[image06: Error Opening IOConfiguration.wvs in WorkVisual 5.0.5]



[image 07: Sunrise Project Export Failure]