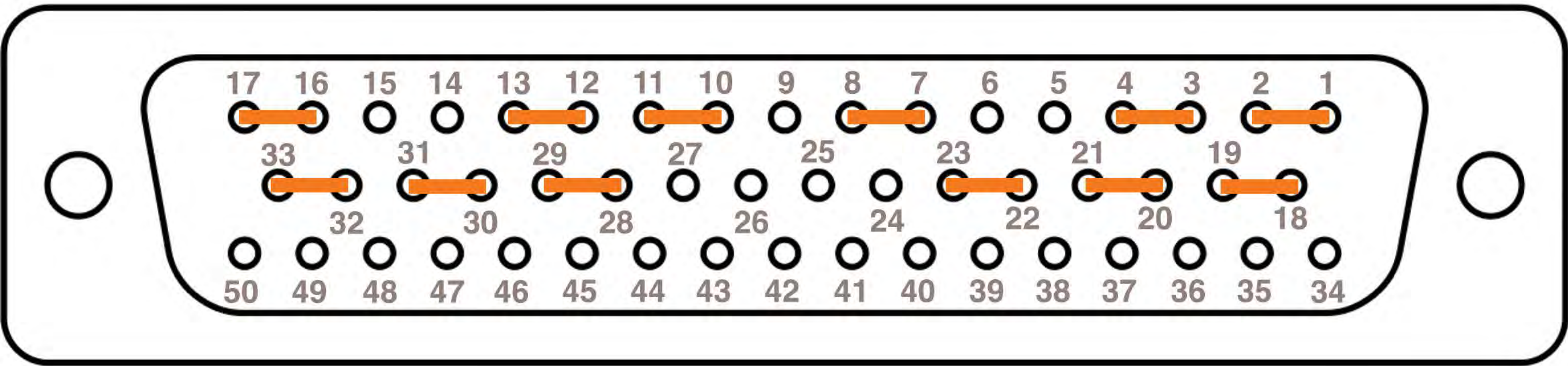
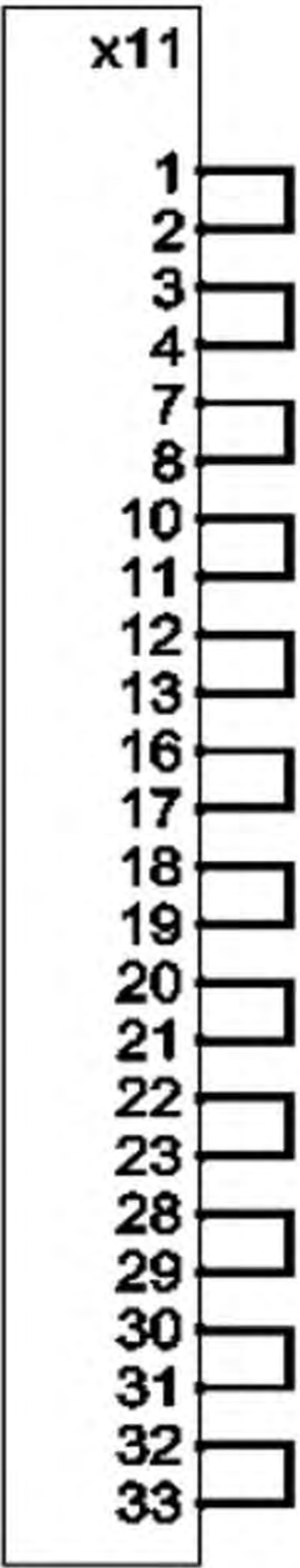


Female DB50 Connector (X11) Elevation

Jumper Diagram



Signal Description	Channel	Pins
External E-Stop	A	1-2
	B	10-11
Operator Safety "Gate"	A	3-4
	B	12-13
Safe Op Stop	A	7-8
	B	16-17
Safety Stop 2	A	18-19
	B	28-29
External Enable 1	A	20-21
	B	30-31
External Enable 2	A	22-23
	B	32-33



Sources

Kuka Robotics Sales Application Engineer
forum.robotsinarchitecture.org

KUKA

4478019 KRC4 comp. Steckerbeip.X12

Artikel Nr.: 00212328

STATIC
DISSIPATIVE

STATIC
DISSIPATIVE

STATIC
DISSIPATIVE

STATIC
DISSIPATIVE

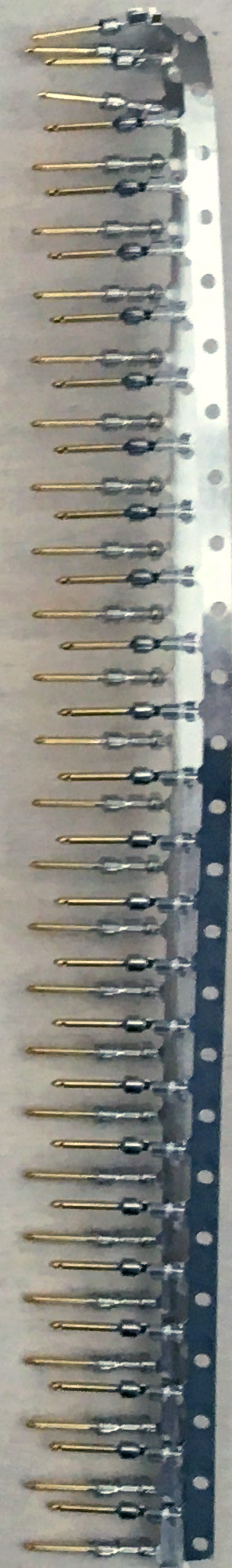
STATIC
DISSIPATIVE

STA
DISSIF



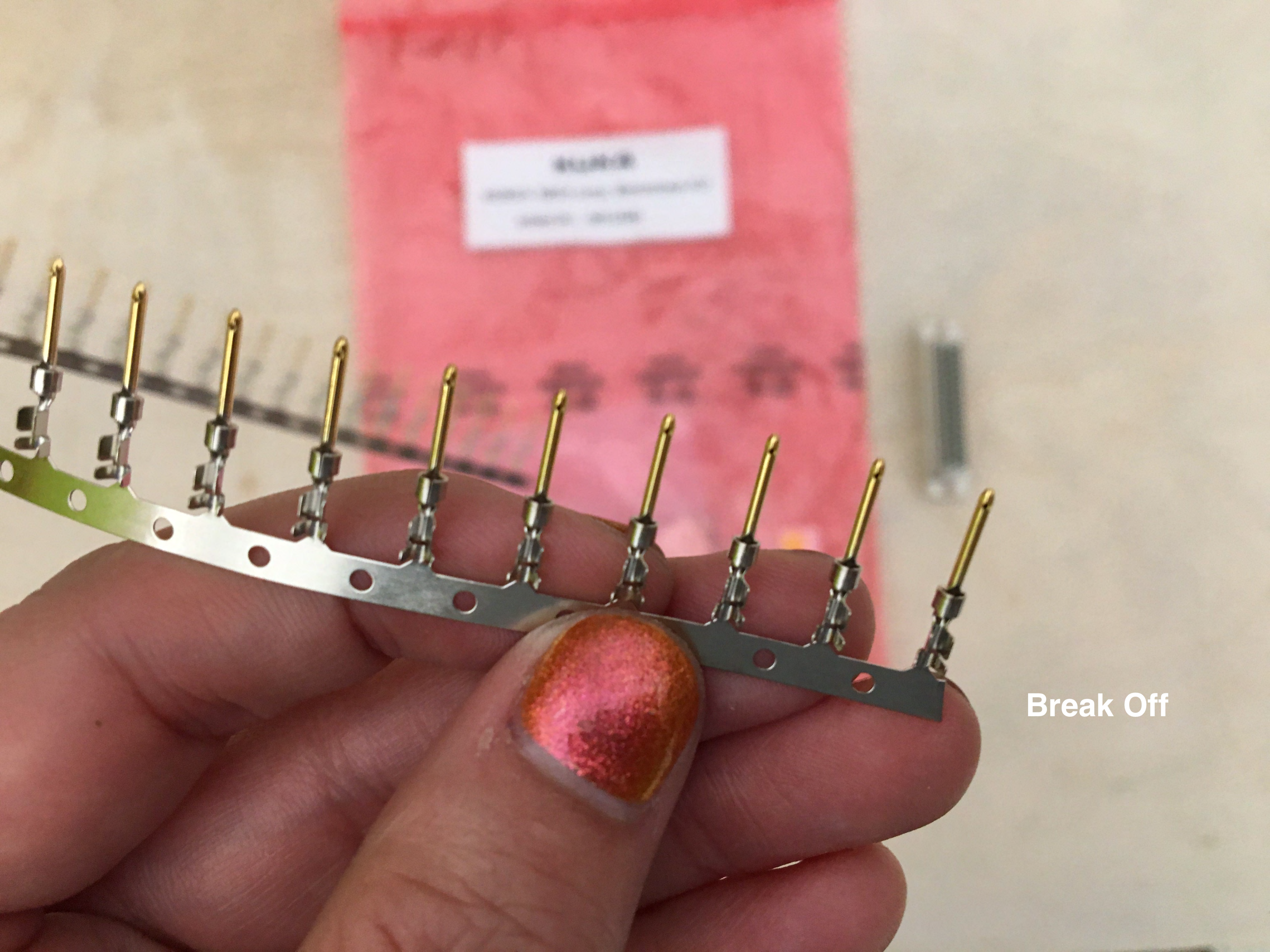
X12

Crimp Pins

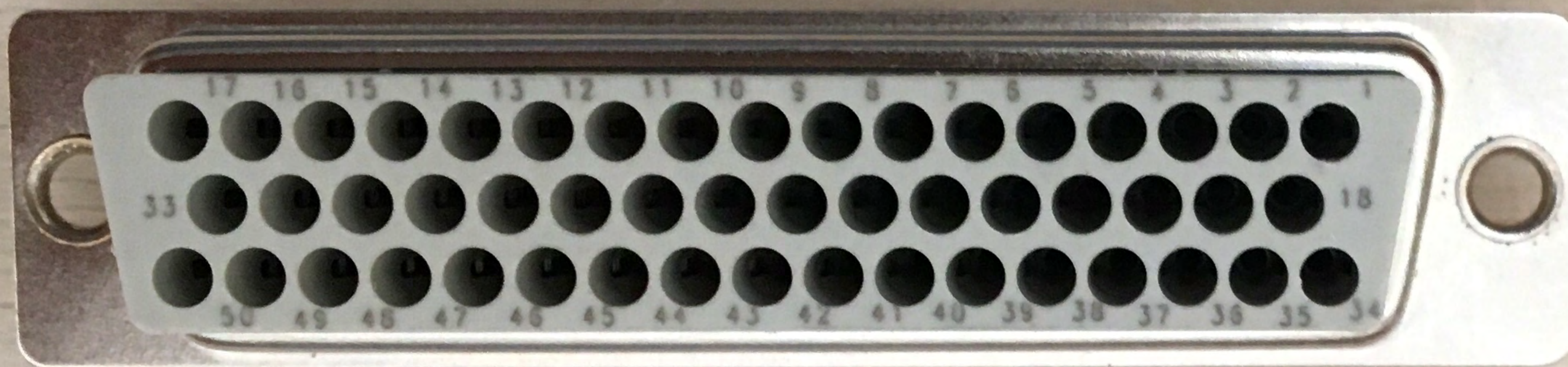


DB 50
Male
Connector

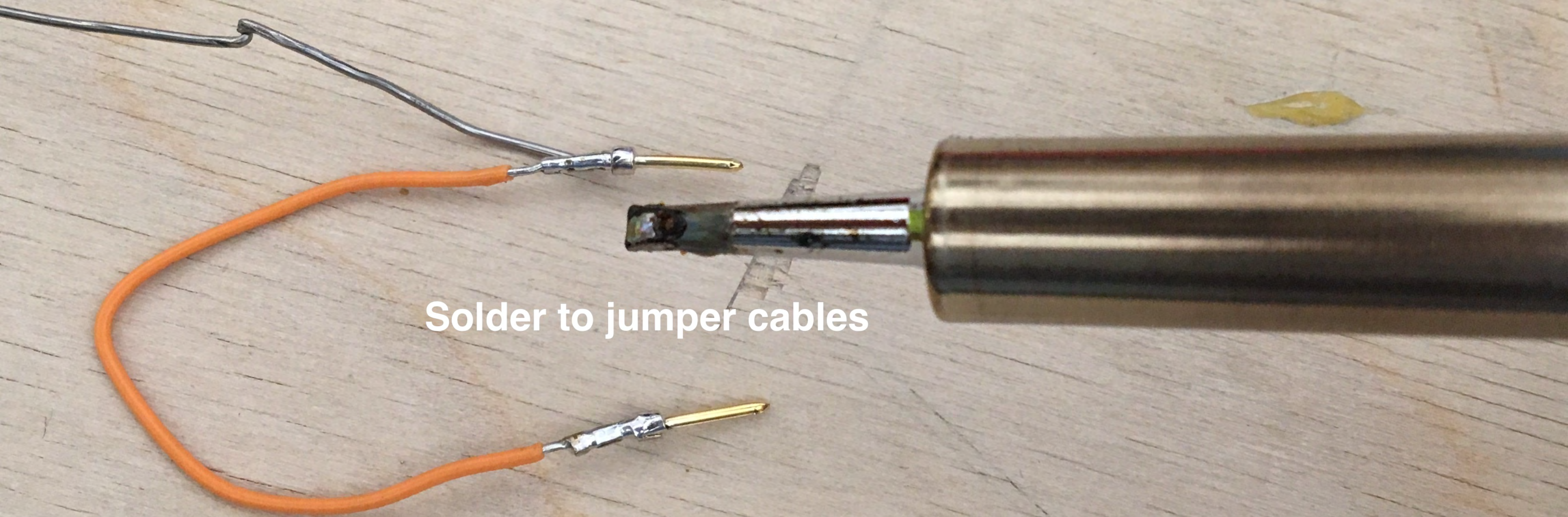




Break Off

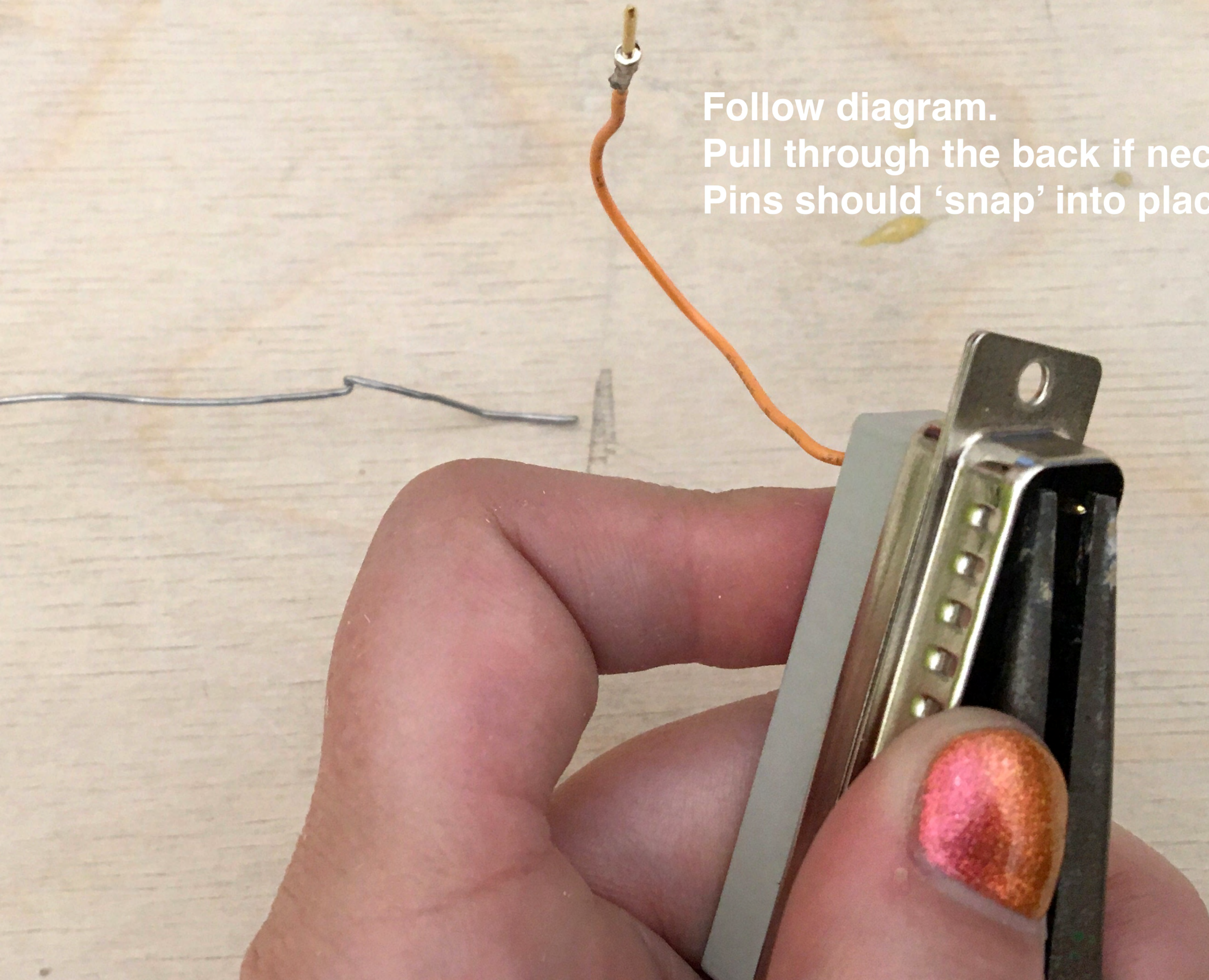


Connect to
jumper
wires



Solder to jumper cables

Follow diagram.
Pull through the back if necessary.
Pins should 'snap' into place.



Front completed

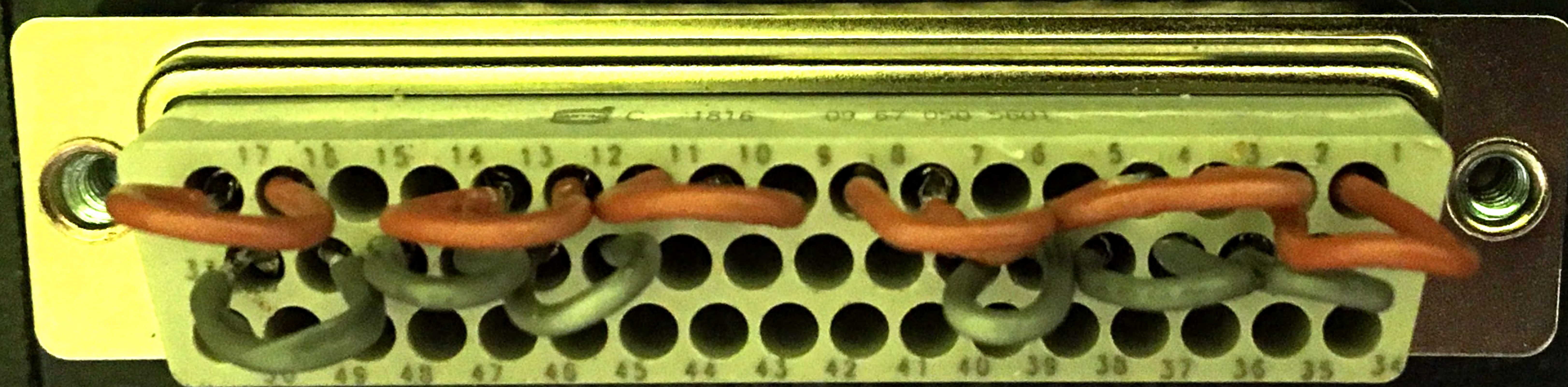




Back completed

X11

X19



Plug into X11

X55